

JEFFERSON FIRE & SAFETY DEFIBRILLATOR MOUNTS

MORE HOLDING POWER FOR

PHILIPS

DEFIBRILLATORS



NCE Mounts provide the maximum protection for your Philips defibrillator, minimizing the risk of costly repairs due to device impacts or falls during transport. More importantly, these mounts will protect your EMT's from flying defibrillators in the event of a sudden stop, accident or roll-over.

**INQUIRE ABOUT OUR
WALL MOUNT TODAY**

- One hand quick release
- 360° swivel, easy positioning and viewing
- Easy immediate access
- Easily mounts to countertop
- Baked white enamel for durability
- 5 Year warranty
- Holds to 15G Force

INTERCHANGEABLE

Philips MRx W/ Red or Black Bag

Part Number: H8000A

14.652"(L) x 14.61"(W) x 14.99"(H)



Philips MRx

Part Number: H8000

12.6"(L) x 12"(W) x 2.5"(H)



**IN STOCK FOR
IMMEDIATE DELIVERY**



**Volume Discounts
MADE IN THE USA!**

7620 Donna Drive
Middleton, WI 53562

Phone: (800) 697-3473
or 608-836-0068

www.jeffersonfire.com
email: rob@jeffersonfire.com

JEFFERSON FIRE & SAFETY DEFIBRILLATOR MOUNTS

MORE HOLDING POWER FOR

PHYSIO CONTROL

DEFIBRILLATORS



NCE Mounts provide the maximum protection for your Physio Control defibrillator, minimizing the risk of costly repairs due to device impacts or falls during transport. More importantly, these mounts will protect your EMT's from flying defibrillators in the event of a sudden stop, accident or roll-over.

**INQUIRE ABOUT OUR
WALL MOUNT TODAY**

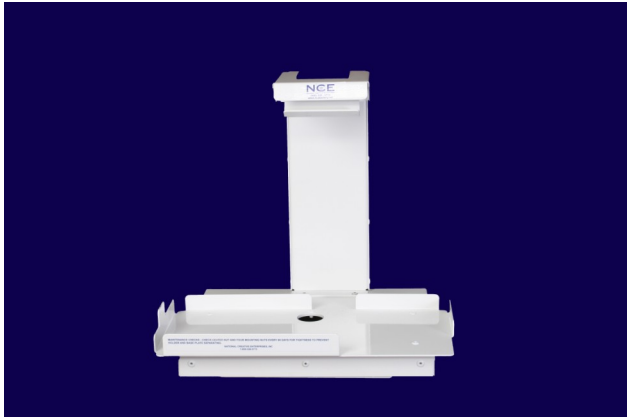
- One hand quick release
- 360° swivel, easy positioning and viewing
- Easy immediate access
- Easily mounts to countertop
- Baked white enamel for durability
- 5 Year warranty
- Holds to 15G Force

INTERCHANGEABLE

LifePak 12/15

Part Number: H7000

15.680"(L) x 11.907"(W) x 15.04"(H)



LifePak 12 W/ Battery Charger

Part Number: H7000A

15.680"(L) x 11.907"(W) x 17.127"(H)



**IN STOCK FOR
IMMEDIATE DELIVERY**



**Volume Discounts
MADE IN THE USA!**

7620 Donna Drive
Middleton, WI 53562

Phone: (800) 697-3473
or 608-836-0068

www.jeffersonfire.com
email: rob@jeffersonfire.com

JEFFERSON FIRE & SAFETY NCE DEFIBRILLATOR MOUNTS

MORE HOLDING POWER FOR

ZOLL

DEFIBRILLATORS



**INQUIRE ABOUT OUR
WALL MOUNT TODAY**

NCE Mounts provide the maximum protection for your Zoll defibrillator, minimizing the risk of costly repairs due to device impacts or falls during transport. More importantly, these mounts will protect your EMT's from flying defibrillators in the event of a sudden stop, accident or roll-over.

- One hand quick release
- 360° swivel, easy positioning and viewing
- Easy immediate access
- Easily mounts to countertop
- Baked white enamel for durability & easy care
- 5 Year warranty
- Holds to 15G Force

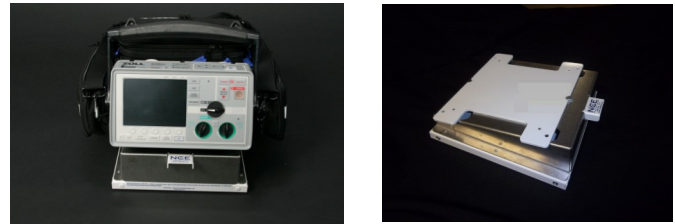
Zoll X Series



Part Number: X9000

11.891"(L) x 13.5"(W) x 13.287"(H)

Zoll E Series



Part Number: H9000

11.6"(L) x 9.3"(W) x 4.7"(H)

Zoll M Series

W/Extreme Pack 2



Part Number: H1800

12.6"(L) x 12"(W) x 2.7"(H)

Zoll M Series

W/O Extreme Pack 2

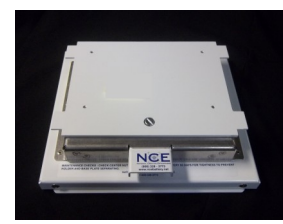


Part Number: H1801

12.6"(L) x 12"(W) x 2.7"(H)

Zoll M Series

W/ Extreme Pack 2 & NIBP



Part Number: H1805

10.5"(L) x 9.3"(W) x 2.5"(H)

**IN STOCK FOR
IMMEDIATE DELIVERY**

**Volume Discounts
MADE IN THE USA!**

JEFFERSON FIRE & SAFETY DEFIBRILLATOR MOUNTS

MORE HOLDING POWER FOR

ZOLL X SERIES

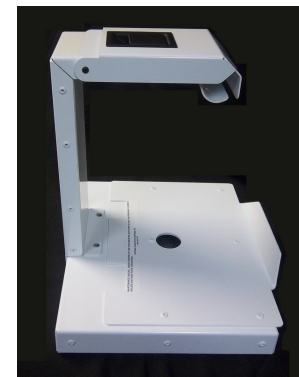
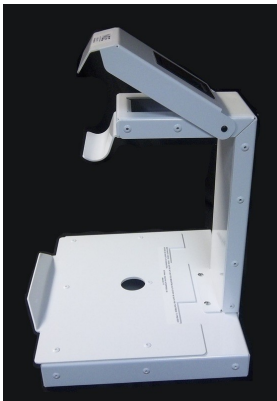
DEFIBRILLATORS



NCE Mounts provide the maximum protection for your Zoll defibrillator, minimizing the risk of costly repairs due to device impacts or falls during transport. More importantly, these mounts will protect your EMT's from flying defibrillators in the event of a sudden stop, accident or roll-over.

**INQUIRE ABOUT OUR
WALL MOUNT TODAY**

- One hand quick release
- 360° swivel, easy positioning and viewing
- Easy immediate access
- Easily mounts to countertop
- Baked white enamel for durability
- 5 Year warranty
- Holds to 15G Force



Part Number: X9000

11.891"(L) x 13.5"(W) x 13.287"(H)

**IN STOCK FOR
IMMEDIATE DELIVERY**



**Volume Discounts
MADE IN THE USA!**

7620 Donna Drive
Middleton, WI 53562

Phone: (800) 697-3473
or 608-836-0068

www.jeffersonfire.com
email: rob@jeffersonfire.com